



# ISLAND BREEZE



**ISLAND BREEZE** Model number: 34MVP28563AH20  
**3 beds • 2 baths • 1568 sq.ft. • 28' width • 56' depth**

Our home building facilities invest in continuous product and process improvements. Plans, dimensions, features, materials, specifications and availability are subject to change without notice or obligation. Renderings and floor plans are representative likenesses of our homes and may differ from the actual homes. We invite you to tour a Home Center near you and inspect the highest value in quality housing available or call (336) 249-7041 to speak with a Home Consultant. Copyright 2017, CMH. All rights reserved.

<https://www.claytonhomeslexington.com>

**CLAYTON HOMES-  
LEXINGTON**

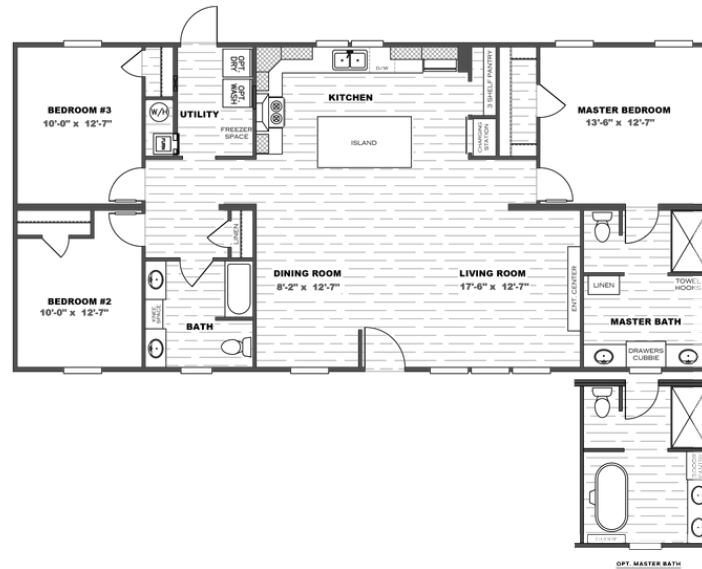
**828 PIEDMONT DRIVE  
LEXINGTON, NC 27295**

Monday - Thursday: 9am - 6pm  
Friday: 9am - 6pm  
Saturday: 9am - 5pm  
Sunday: Closed

(336) 249-7041



# ISLAND BREEZE



## ISLAND BREEZE Model number: 34MVP28563AH20

**3 beds • 2 baths • 1568 sq.ft. • 28' width • 56' depth**

Our home building facilities invest in continuous product and process improvements. Plans, dimensions, features, materials, specifications and availability are subject to change without notice or obligation. Renderings and floor plans are representative likenesses of our homes and may differ from the actual homes. We invite you to tour a Home Center near you and inspect the highest value in quality housing available or call (336) 249-7041 to speak with a Home Consultant. Copyright 2017, CMH. All rights reserved.

<https://www.claytonhomeslexington.com>

### CLAYTON HOMES- LEXINGTON

828 PIEDMONT DRIVE  
LEXINGTON, NC 27295

Monday - Thursday: 9am - 6pm  
Friday: 9am - 6pm  
Saturday: 9am - 5pm  
Sunday: Closed

(336) 249-7041